

Welcome to the Western Humanities I



Welcome to the Western Humanities I

Let's begin with a pop quiz--

Why are you here?

- A. You want to graduate
- B. Add strings to your butterfly net
- C. Communicate with right and left brained people
- D. Mental health benefits

Correct answer: all the above

I decline to accept the end of man. It is easy enough to say that man is immortal simply because he will endure: that when the last ding-dong of doom has clanged and faded from the last worthless rock hanging tideless in the last red and dying evening, that even then there will still be one more sound: that of his puny inexhaustible voice, still talking.

I refuse to accept this. I believe that man will not merely endure: he will prevail. He is immortal, not because he alone among creatures has an inexhaustible voice, but because he has a soul, a spirit capable of compassion and sacrifice and endurance.

The poet's, the writer's, duty is to write about these things. It is his privilege to help man endure by lifting his heart, by reminding him of the courage and honor and hope and pride and compassion and pity and sacrifice which have been the glory of his past. The poet's voice need not merely be the record of man, it can be one of the props, the pillars to help him endure and prevail.

-William Faulkner



And now for a moment of
Zen:

"Writers can treat their mental
illnesses every day."

-Kurt Vonnegut

prehistory



Prehistoric History of Art 40,000-10,000 BCE

- Paleolithic Culture ca. 6 million-10,000 BCE
- ca. 2,500,000 first stone tools used
 - ca. 500,000 fire used
 - Over 100,000 years ago, Neanderthals buried their dead with artifacts. This is the earliest evidence that they had some religious belief system. However, our branch of Homo sapien ancestors started creating art approximately 40,000 years ago.



Stonehenge ca. 3000-1800 BCE





Civilization goes back approx. to 8000-4000 BCE
(Neolithic or New Stone Age)

Factors contributing to civilization:

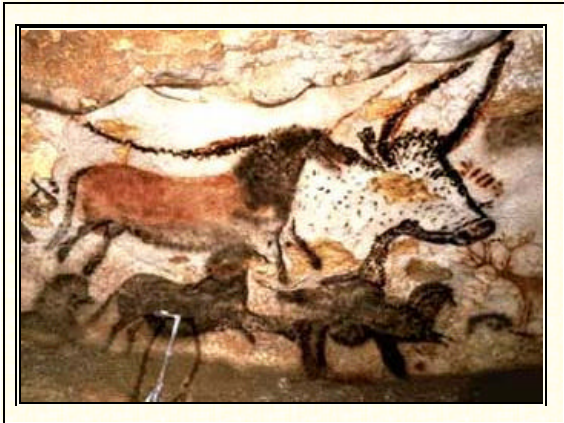
- Urbanization
- Government
- Social class based upon money and profession
- Specialization of the work force
- Written communication
- Religious beliefs

Cave Art and Sculpture

- Lascaux, France
- Altamira, Spain









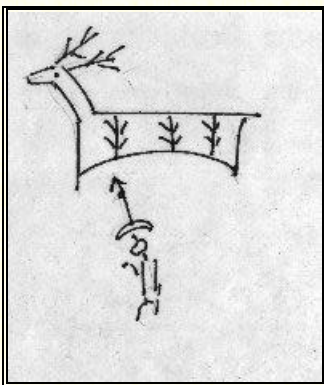


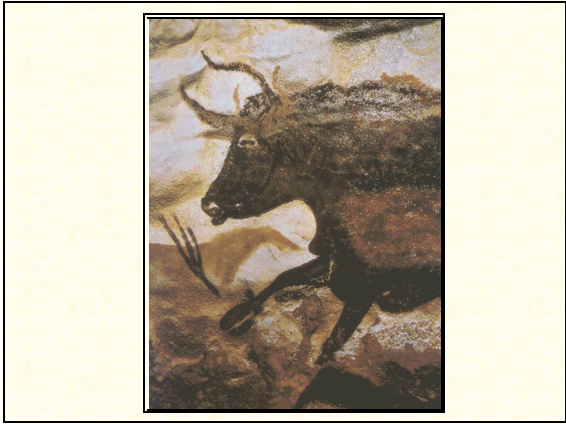




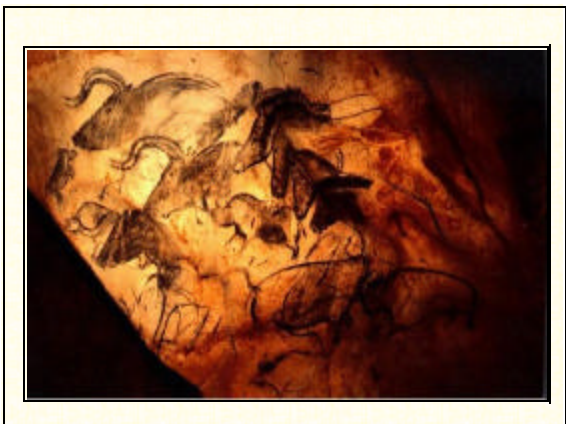




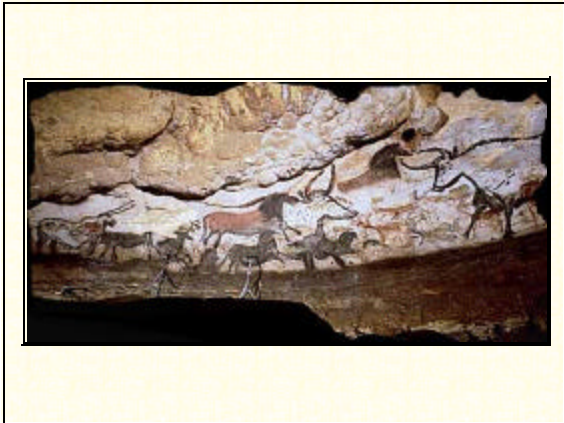


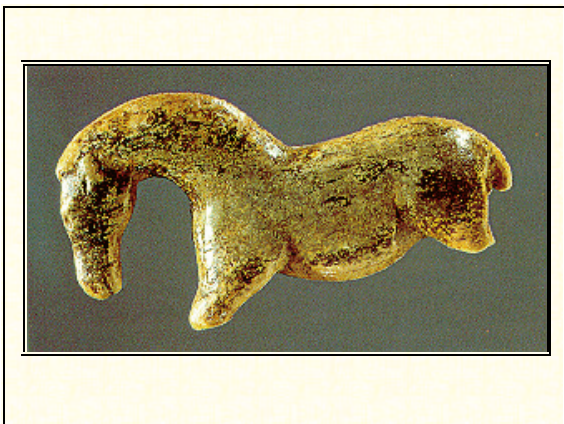




















**The Venus
of
Willendorf**

25,000-20,000 BCE

For an interesting world timeline:

<http://www.metmuseum.org/toah/hm/01/hm01.htm>
